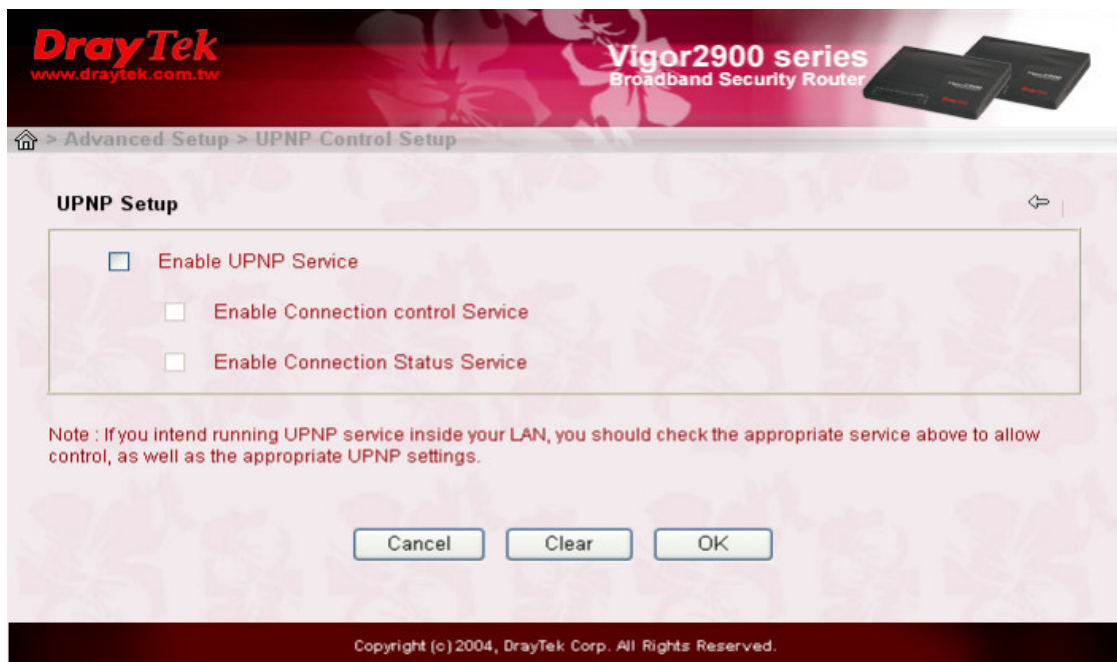

CHAPTER 11

Universal Plug and Play(UPnP) Service Setup

11.1 Introduction

The UPnP protocol is supported to bring to network connected devices the ease of installation and configuration which is already available for directly connected PC peripherals with the existing Windows 'Plug and Play' system.

For NAT routers, the major feature of UPnP on the Vigor2900 router is “NAT Traversal”. This enables applications inside the firewall to automatically open the ports that they need to pass through a router. It is more reliable than requiring a router to work out by itself which ports need to be opened. Further, the user does not have to manually set up port mappings or a DMZ.



UPnP Service Setup

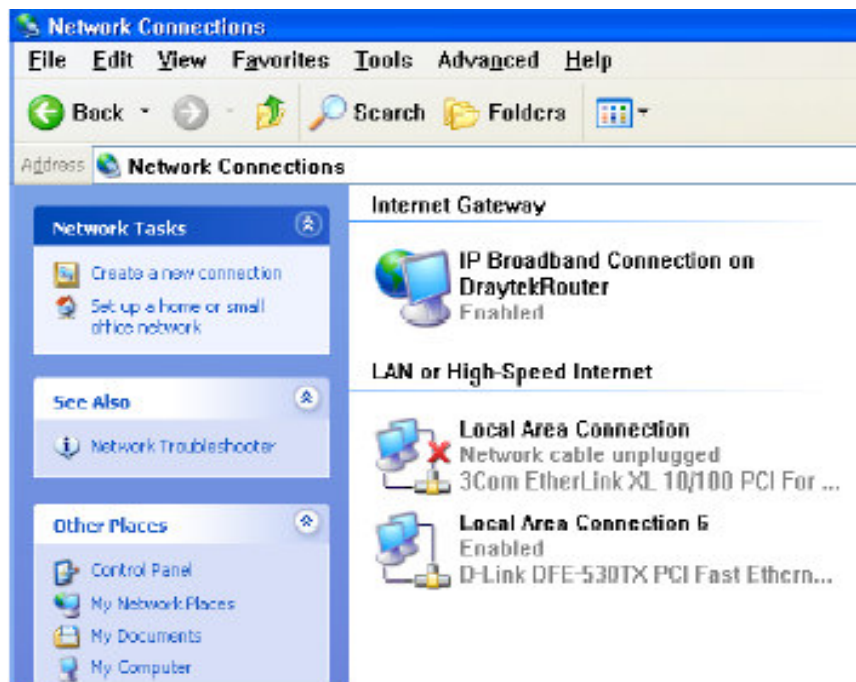
UPnP is available on Windows XP and the Vigor2900 router provides the associated support for MSN Messenger to allow full use of the voice, video and messaging features.

11.2 Configuration

You can enter the **UPnP Setup** via **Advanced Setup > UPnP Service Setup** on the Web Configurator in your V2900 router.

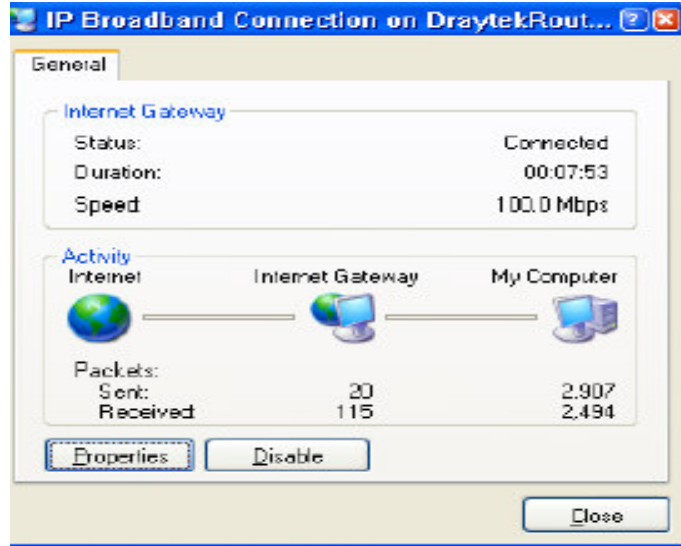
Enable UPnP Service. Accordingly, you can enable either the **Connection Control Service** or **Connection Status Service**.

Click the **IP Broadband Connection on DrayTek Router** on Windows XP/Network Connections, as shown below. The connection status and control status will be able to be activated.



The NAT Traversal of UPnP enables the multimedia features of your applications to operate. This has to manually set up port mappings or use other similar methods. The screenshots above show examples of this facility.

UPnP Service Setup



The UPnP facility on the Vigor2900 router enables UPnP aware applications such as MSN Messenger to discover what are behind a NAT router, learn the external IP address and configure port mappings on the router. Subsequently, such a facility forwards packets from the external ports of the router to the internal ports used by the application.

